



## **SAINT RAPHAEL, AGAY ROCHES ROUGES**

South of France – Hôtel Premium

### **ACCOMMODATION**

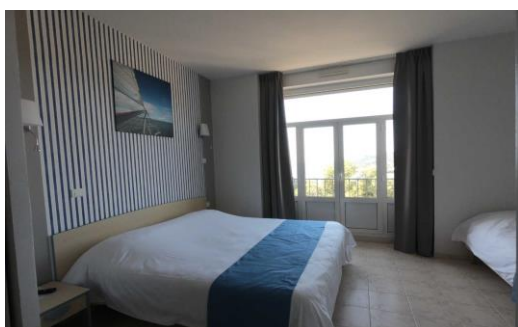
The hotel is composed of a main building with elevator. The rooms are equipped with air conditioner, a shower room with WC, telephone and TV with extra-charge: washing-machine and tumble-drier.

- Sheets and towels are provided for a week.
- Rooms for 2, 3, 4 persons, full board and half board.
- The hotel is 800 m from the beach.
- from Saturday to Saturday

### **THE DAY OF YOUR ARRIVAL**

Your room will be available from 4.00 pm (Saturday).

In case of late arrival, please inform the hotel. On your arrival, we will ask you: your voucher and payment for your stay (excepted German and Belgian people), payment of the tourist tax.



### **Access:**

By Car: GPS 43.435135,6.859015.

By Plane: Nice-Côte d'Azur airport 56 km.

By Train: TGV station of Saint-Raphaël then correspondence

Agay station (10 min) - possibility of shuttle (between the train station of Agay and the center, only on Saturday: information and reservations at the resort).

Informations valid subject to omission, typographic error or change of service or price, during the year, due to the provider.

**South of France**

**Renovated**

**Heated swimming  
pool**

**Air conditioner**

**Car park**

**Sport and wellness**

**New 2024 :Full  
board and half  
board**

**Near Saint Tropez,  
Cannes, Monaco**

### **ADDRESS:**

**Igesa « LES ROCHES  
ROUGES »**

Chemin du Petit-  
Paradis – 83530 AGAY

Phone number:

0033 494 821 200

E-mail: [agay@igesa.fr](mailto:agay@igesa.fr)





## VERNET-LES-BAINS

### PYRENEES- *hotel premium*

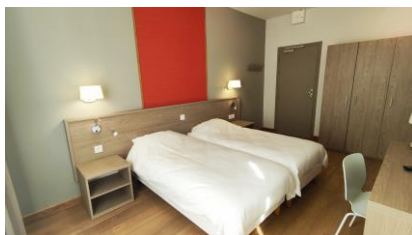
OUR CHARMING IGESA HOTEL, DATING FROM THE 19TH CENTURY, IS LOCATED IN A MAGNIFICENT GREEN PARK.

EXPLORE THE VILLAGE OF VERNET-LES-BAINS AND ITS PICTURESQUE STREETS WITH STONE AS WELL AS ITS HEALING THERMAL BATHS.

#### **ACCOMODATION** Hotel with full board or half board

Rooms for 2 or 3 persons equipped with TV and bathroom with shower, WC.

- Towels are provided for one week
- the cleaning of your room during the stay is your responsibility (materials and cleaning product available).
- your room must be vacated before 10h on the day of your departure.
- possibility of having accommodation on the park or casino side paying a supplement.



#### **THE DAY OF YOUR ARRIVAL**

Your room will be available from 16h (Saturday). On your arrival, we will ask you:

- your voucher and payment for your stay (excepted German and Belgian people)
- payment of the tourist tax.

#### **Access:**

- By A9 highway: exit 41 Perpignan center, direction Andorra / Prades by the N116. In Villefranche de Conflent, take direction *Vernet Les Bains*. At the Vernet roundabout, turn right towards Casino. At the 2nd bridge, cross the bridge, towards Casino.

-By Train: Perpignan station, then train with terminus at Villefranche de Conflent.

-Airport: Perpignan Rivesaltes

-GPS coordinates: 42.544144, 2.388833

Informations valid subject to omission, typographic error or change of service or price, during the year, due to the provider.

Hotel

Car park free

Completely  
renovated hotel

Sport and wellness

Wifi access

In the heart of a  
magnificent park

Direct proximity to  
the thermal baths

Arrivals and  
departures on  
saturday

#### **ADDRESS:**

**Hôtel du Portugal IGESA**  
**66820 Vernet Les Bains**

Tél.: 0033 4.68.05.55.62  
@ : [vernetlesbains@igesa.fr](mailto:vernetlesbains@igesa.fr)





## BIARRITZ Hôtel « Beau séjour »

**Accommodation :** The hotel consists of rooms from 1,2 or 3 people with shower, toilet and equipped with TV and air conditioner.

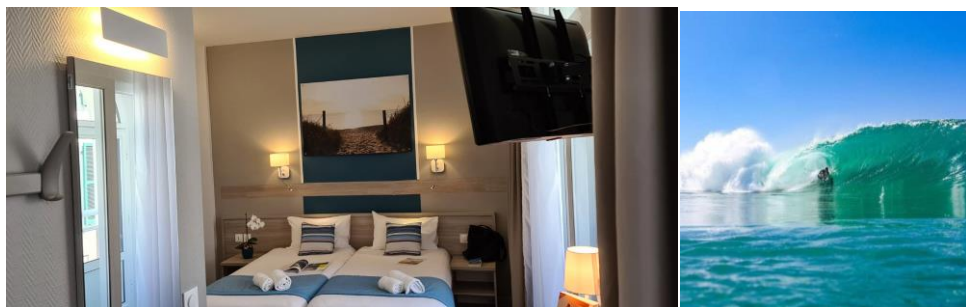
### Information +

- elevator
- Bed sheets and towels included
- Tourist tax to be paid upon arrival
- Recommended vehicle
- **Paid public parking nearby, recommended** (about 75 € / week in high season - price given for information only and subject to change) - limited places and reservation before the stay with the reception (biarritz@igesa.fr)
- animals not allowed, arrival time: from 4 pm, departure time: before 10 am

### THE DAY OF YOUR ARRIVAL

Your room will be available from 4 pm. In case of late arrival, please inform the hotel. On your arrival, we will ask you:

- your voucher and payment for your stay (excepted German and Belgian people)
- payment of the tourist tax



### Access:

- Motorway: exit 4 Biarritz La Négresse. After the toll, take St Jean de Luz / Bidart. At 1.5 km turn right at the roundabout, continue straight for 2.5 km, direction Biarritz center to the Radisson Hotel. Opposite, direction Port Vieux. At the bottom of the coast, turn left, hotel 50m on the right.
- Train: Biarritz station "La Négresse" (taxi or bus line 8 or 10 Chronoplus stop Mairie de Biarritz).
- Airport: Biarritz Basque Country (taxi or bus line No. 14 Chronoplus stop Mairie de Biarritz).
- GPS coordinates: 43.481776, -1.565316
- Connections are not provided by IGESA between the stations or airports and the hotel.

Informations valid subject to omission, typographic error or change of service or price, during the year, due to the provider.

Seaside resort in the  
Basque country

Wifi zone

Renoved

Air conditioner

City center hôtel

Arrivals and  
departure on  
saturday

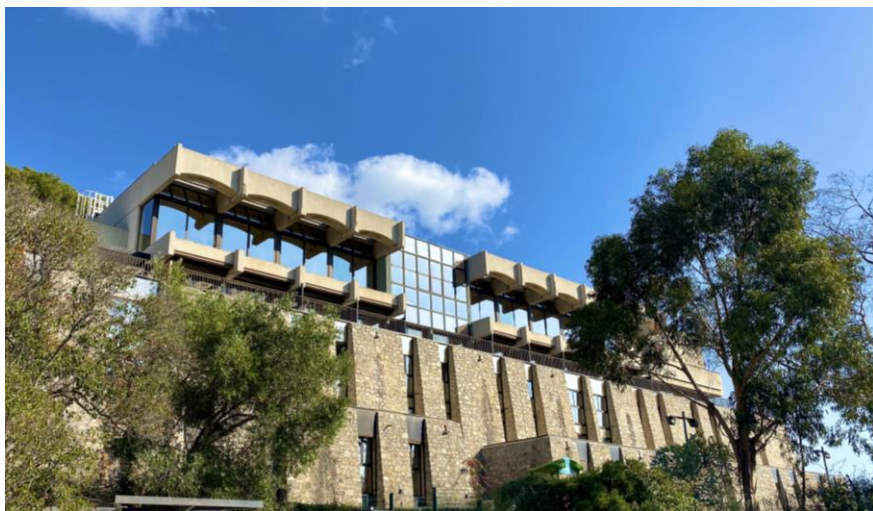
Half board or B&B

ADRESS :

**Résidence Igesa**  
Hôtel « Beau Séjour »  
5 rue Gaston Larré  
64200 Biarritz

Phone :  
0033 559 24 90 21  
biarritz@igesa.f





## Hyères, Hôtel « *Le continental* »

An ideally located hotel, in the heart of one of the French Riviera.

The hotel consists in 78 air-conditioned rooms for 2 or 3 people, and 4 rooms accessible to people with low mobility. Some rooms are connecting. For your comfort: swimming pool, lift, bar \* with terrace, air-conditioned restaurant.

### ACCOMMODATION

Rooms are equipped with a shower room with WC, telephone, TV.

- Towels are provided for a week.
- For stays of more than one week, the change of linen is done at the end of the week.
- the cleaning of your room during the stay is your responsibility (materials and cleaning product available).
- Your room must be vacated before 10:00 on the day of departure.



### THE DAY OF YOUR ARRIVAL

Your room will be available from 4.00 pm (Saturday). In case of late arrival, please inform the hotel. On your arrival, we will ask you:

- your voucher and payment for your stay (excepted German and Belgian people), payment of the tourist tax

#### Access:

By Car: GPS 43.435135,6.859015.

By Plane: Nice-Côte d'Azur airport 56 km.

By Train: TGV station of Saint-Raphaël then correspondence

Agay station (10 min) - possibility of shuttle (between the train station of Agay and the center, only on Saturday: information and reservations at the resort).

Informations valid subject to omission, typographic error or change of service or price, during the year, due to the provider.

New : Swimming  
pool

French Riviera

Full board

Near from the  
beach

Fitness outdoor

Free car park

Arrivals and  
departures on  
saturday

New : full board and  
half-board

### ADDRESS:

**HOTEL IGESA "LE  
CONTINENTAL"**

Address : 3 avenue  
Victor-Basch - 83400  
HYÈRES

Phone number : 0033  
494 126 868

E-mail: [hyeres@igesa.fr](mailto:hyeres@igesa.fr)





## LA BAULE - PORNICHET

### IN FRONT OF THE ATLANTIC OCEAN

The residence, located on the seafront, invites you to discover the bay of La Baule and the mild climate. Sea view apartments for 4 to 7 people with balcony.

### ACCOMMODATION

The apartments are equipped with a bedroom, a bathroom, separate toilet, a living room with kitchenette, TV.

- cleaning of your apartment during your stay is your responsibility
- your apartment must be vacated before 10h on the day of your departure. It must be made clean. If your apartment is not cleaned satisfactorily, a cleaning fee will be charged. To avoid cleaning operations, cleaning services are available: 80 € for the complete cleaning of the apartment, 40 € for the kitchen area or 40 € for the rest of the apartment.
- WiFi zone, bicycle storage, parking lots indoor and outdoor, games room, tourist info area with free access.



**THE DAY OF YOUR ARRIVAL** Your room will be available from 4.00 pm (Saturday). In case of late arrival, please inform the hotel. On your arrival, we will ask you : your voucher and payment for your stay (excepted German and Belgian people), payment of the tourist tax, a deposit of € 150.00 (cash or identity card).

### Access:

By Road: RN 165 - 171 and D92, direction Pornichet. The building is located on the seafront. By Train: Pornichet station (800 m from the residence). By Airport: Nantes

GPS coordinates: 47.272314, -2.354293

If you arrive with a car, you have to enter in the parking lot at 28 ter avenue de Mazy.

In order to facilitate your arrival, an email will be sent to you before your stay, indicating the access code and the number of your park.

Car park : Please contact the residence for information if you did not provide your email address when booking.

Informations valid subject to omission, typographic error or change of service or price, during the year, due to the provider.

In front of the  
Atlantic Ocean

Appartements

Exceptional location  
on the seafront

Wifi zone

sheets and towels  
included

Bicycle storage

Coastline of the  
Côte d'Amour

Arrivals and  
departure on  
saturday

### ADDRESS:

**RÉSIDENCE IGESA  
PORNICHET**

188, boulevard des  
Océanides

44380 PORNICHET

Phone :

00 33 2 51 75 05 10  
pornichet@igesa.fr





## LE TREZ HIR *VILLAGE CLUB PREMIUM*

FACING THE OCEAN, THE IGESA VILLAGE OVERLOOKS THE LARGE SANDY BEACH OF TREZ-HIR WHERE YOU CAN TRY THE PLEASURES OF WALK FISHING, AN ANCESTRAL PRACTICE VERY POPULAR IN BRITTANY.

### ✓ ROOMS WITH FULL BOARD OR HALF BOARD

- Rooms are equipped with a bathroom with WC, TV
- towels are provided for one week.
  - for stays longer than a week, the linen is changed at the end of every week.
  - supplement for accommodation with sea view



### ✓ RENTAL APARTMENT

For rent, the village club has apartment for 6 to 8 people with private terrace. It consists of a shower room and separate WC, an equipped kitchenette, a dining area and a small living room equipped with TV.

- sheets and towels included, beds not made on arrival.
- for stays longer than a week, the linen is changed at the end of every week.
- cleaning of your apartment during the stay is your responsibility (maintenance materials available, products not supplied)
- your apartment must be vacated before 10h on the day of your departure. It must be made clean. If it is not cleaned, you will be billed for a satisfactory cleaning fee. To free you from cleaning operations, cleaning services are available: 80 € for cleaning, the full apartment, 40 € for the kitchen area, 40 € for the apartment (excluding kitchen area).



### THE DAY OF YOUR ARRIVAL

Your apartment will be available from 16H (Saturday). In case of late arrival, please inform the residence. On your arrival, we will ask you:

- your voucher and payment for your stay (excepted German and Belgian people)
- payment of the tourist tax
- a deposit of € 150.00 (cash or id card), only for rental apartment.

### Access:

By Road: from Paris or Quimper by expressway to Brest. In Brest, move towards Le Conquet via the D789 (follow the hospital La Cavale Blanche). About 20 km from Brest, turn left and move towards Trez-Hir beach in Plougonvelin. - By Train: Brest station, bus line 11, direction Le Conquet, Trez-Hir Plage stop. - From Airport: Brest / Guipavas, tram to Brest station, bus line 11, direction Le Conquet, Trez-Hir plage stop. (Connections are not provided by IGESA between stations or airports and the village club).

Informations valid subject to omission, typographic error or change of service or price, during the year, due to the provider.

Seaside

Ocean

Accommodations  
for 2 , 4 or 6 persons  
with full board or  
Rental Apartments

Outdoor parking  
located inside the  
residence

Sheets and towels  
included

Arrivals and  
departure on  
saturday

ADRESS :

**IGESA Village Club of  
Trez-Hir :**

16 Bd de la Mer –  
29217

PLOUGONVELIN

Phone :

0033 2.98.48.30.43

@: letrezhir@igesa.fr

GPS coordinates:

48.348143, -4.703736





## MEAUDRE EN VERCORS

Southern Alps

Meaudre is the starting line for several walks in as quiet and, at the same time, wild landscapes.

The residence consists of studios for 2 to 5 people.

All accommodations have a TV, a kitchenette and a bathroom with shower, sink and toilet.

- Sheets and towels are provided for a week (beds not made on arrival).
- the cleaning of the studio during the stay is your responsibility (maintenance materials available, products not provided).
- Your studio must be vacated before 10:00 am day of your departure. It will have to be cleaned. If it is not cleaned properly satisfactory, cleaning fees will be charged. To avoid the cleaning operations, household services are you proposed: 80 € for the complete cleaning of the studio, 40 € for the kitchen area, 40 € for the studio (excluding kitchen area).



### THE DAY OF YOUR ARRIVAL

Your apartment will be available from 16:00 (Saturday). In case of late arrival, please inform the hotel. Phone number: 00 33 4 76 95 20 40 or meaudre@igesa.fr. . On your arrival, we will ask you:

- your voucher and payment for your stay (excepted German and Belgian people)
- payment of the tourist tax
- a deposit of € 150.00 (cash or id card)

### Access:

By Car: GPS 45 14 35 23 66509.5.53 32 51 42 529.

By Train: Get off at Grenoble Station (38 km from the resort), then take a bus to reach the residence.

Informations valid subject to omission, typographic error or change of service or price, during the year, due to the provider.

Rental  
acomodations

Southern Alps

Hikers' paradise

Wifi access

Large housing

Fitness outdoor

Car park

Sport and wellness  
Outdoor activities

Arrivals and  
departure on  
saturday

### ADDRESS:

**IGESA**

**"LES CHABERTS" -  
MEAUDRE**

BP 8 - 38112

AUTRANS-MÉAUDRE

Phone number:

0033 4 76 95 20 40

E-mail:

meaudre@igesa.fr





## **MONT DAUPHIN** North Alps

Linked to the nature, the charm of an exceptional flora and fauna from the Queyras and Ecrins natural parks: that is what is waiting for you in this residence, in the heart of a little walled town.

### **ACCOMMODATION**

The apartments have an equipped kitchen, a shower room and a television. 36 apartments (including 2 equipped for disabled persons) from 2 to 8 persons, shower, equipped kitchen.

- Bed linen and towels are provided for one week, beds not made on arrival.
- cleaning of the apartment during the stay is your responsibility (maintenance materials available, products not provided).
- Your apartment must be vacated at 10:00 on the day of departure. It will have to be made clean. If it is not cleaned satisfactorily, a cleaning fee will be charged. To avoid cleaning operations, household services are offered: - large apartment of 8 pers.: 100 € for the complete cleaning of the apartment, 40 € for the kitchen, 60 € for the apartment (excluding kitchen). - small apartment of 4 persons: 80 € for the complete cleaning of the apartment, 40 € for the kitchen area, 40 € for the apartment (excluding kitchen area).
- 20 minutes from the stations of Vars and Risoul.



### **THE DAY OF YOUR ARRIVAL**

Your room will be available from 16:00 (Saturday). In case of late arrival, please inform the hotel. Phone number: 0033 4 92 45 04 88 or by mail at [montdauphin@igesa.fr](mailto:montdauphin@igesa.fr)

. On your arrival, we will ask you:

- your voucher and payment for your stay (excepted German and Belgian people)
- payment of the tourist tax
- a deposit of € 150.00 (cash or id card)

### **Access:**

By Car: GPS 44.669374,6.623801.

By Train: SNCF station of Mont-Dauphin. (public parking nearby; circulation permitted only on arrival and departure days; essential vehicle).

Informations valid subject to omission, typographic error or change of service or price, during the year, due to the provider.

**Rental  
acomodations**

**Hikers' paradise**

**Wifi access**

**Fitness outdoor**

**Sport and wellness**

**Outdoor activities**

**Public parking  
nearby**

**Arrivals and  
departures on  
saturday**

**ADDRESS:**

**IGESA Mont-Dauphin**  
Rue Catinat 05600  
MONT-DAUPHIN

Phone number:  
0033 4 92 45 04 88

E-mail:  
[montdauphin@igesa.fr](mailto:montdauphin@igesa.fr)







## MONT LOUIS

IN THE HEART OF THE PYRENEES AT AN ALTITUDE OF 1600 METERS IN THE HEART OF PYRENEES, MONT-LOUIS IS THE HIGHEST FORTIFIED CITY IN FRANCE. YOU CAN SKY 3 AREAS : CAMBRE D'AZE, FONT ROMEU, LES ANGLES.

### **ACCOMODATION Hotel with full board and half board**

The rooms are equipped with : bathroom with WC, and television.

- sheets and towels are provided for one week.
- for stays longer than a week, the linen is changed at the end of the week.
- the cleaning of your room during the stay is your responsibility (materials and cleaning product available).
- your room must be vacated before 10h on the day of your departure.



### **THE DAY OF YOUR ARRIVAL**

Your room will be available from 16h, In case of late arrival, please inform the hotel On your arrival, we will ask you :

- your voucher and payment for your stay (excepted German and Belgian people)
- payment of the tourist tax.

### **Access:**

- By Road: from Perpignan, follow Andorra by RN 116. From Toulouse by the RN 120 and the RN 116, follow Perpignan. From Carcassonne by the RN 118, follow Mont-Louis. - By Train: to Perpignan TGV, connection to *Mont-Louis / La Cabanasse* station, via Villefranche de Conflent. To Toulouse TGV, correspondence from Tour de Carol to *Mont-Louis / La Cabanasse*. - Airport: Perpignan - GPS coordinates: 42.500959,2.114439

Informations valid subject to omission, typographic error or change of service or price, during the year, due to the provider.

Hotel

Car park free

Bike room

Panoramic view

Sport and wellness

Wifi access

Near the Principality  
of Andorra and  
Spain

Arrivals and  
departures on  
saturday

### **ADDRESS:**

**Hôtel Club IGESA Les  
Sorbiers**  
66210 Mont-Louis

Tel. : 0033 4 68 04 20 97

@ : [montlouis@igesa.fr](mailto:montlouis@igesa.fr)





## PRALOGNAN

**In the heart of the National Park "La Vanoise", the starting line for numerous hikings in a heart of nature.**

### **ACCOMODATION rooms with full board and half board**

The rooms are equipped with a shower room with WC, and a television.

- Sheets and towels are provided for a week.
- For stays of more than one week, the change of linen is done at the end of the week.
- the cleaning of your room during the stay is your responsibility (materials and cleaning product available).
- Your room must be vacated before 10:00 on the day of departure.
- Pets are not admitted
- Outdoor parking free. Covered and closed parking: 42€ / weekly



### **THE DAY OF YOUR ARRIVAL**

Your room will be available from 4.00 pm (Saturday).

In case of late arrival, please inform the hotel. On your arrival, we will ask you : your voucher and payment for your stay (excepted German and Belgian people), payment of the tourist tax.

### **Access:**

Car: GPS 381818,6,7207465.

By Plane: Chambéry airport 110 km.

By Train: SNCF station of Moutiers 26 km from the hotel.

Informations valid subject to omission, typographic error or change of service or price, during the year, due to the provider.

Savoy

Renoved

Hikings

Car park

Sport and wellness

Animation and activities

Foot of the track

Wifi access

Arrivals and departures on sunday

### **ADDRESS:**

**CLUB IGESA HOTEL  
PRALOGNAN**

Address: Avenue  
Chasseforêt  
73710 PRALOGNAN-LA-  
VANOISE

Phone number:  
0033 4 79 08 72 03  
Mail: [pralognan@igesa.fr](mailto:pralognan@igesa.fr)



**PUY SAINT-VINCENT location du 22/12/2024 au 23/03/2025**

Location - Arrivées/départs le dimanche

Prix en € par semaine et par appartement	Du 05/01/2025 au 19/01/2025			Du 19/01/2025 au 09/02/2025 et du 09/03/2025 au 23/03/2025			Du 22/12/2024 au 05/01/2025 et du 09/02/2025 au 09/03/2025		
	A	B	C	A	B	C	A	B	C
2 pièces 5 pers.			375,47			566,61			682,67
3 pièces 7 pers.			457,66			690,65			832,11

Taxe de séjour à régler sur place.

**PUY SAINT-VINCENT Pension complète du 22/12/2024 au 23/03/2025**

Pension complète - Arrivées/départs le dimanche

Prix en € par personne et par semaine	Du 05/01/2025 au 19/01/2025			Du 19/01/2025 au 09/02/2025 et du 09/03/2025 au 23/03/2025			Du 22/12/2024 au 05/01/2025 et du 09/02/2025 au 09/03/2025		
	A	B	C	A	B	C	A	B	C
Tranches tarifaires									
Adulte			372,21			424,79			532,55
Enf. de 12 à - 18 ans			297,77			339,83			426,04
Enf. de 6 à - 12 ans			260,55			297,35			372,78
Enf. de 2 à - 6 ans			186,11			212,40			266,27

**Supplément chambre individuelle** : 14,00 €/jour/pers - Offert sur tout le séjour dès la 2ème semaine consécutive, (excepté du 24/12/2024 au 05/01/2025 et du 09/02 au 09/03/2025).

Taxe de séjour à régler sur place.

**PRALOGNAN LA VANOISE Pension complète du 22/12/2024 au 23/03/2025**

Pension complète - Arrivées/départs le dimanche

Prix en € par personne et par semaine	Du 05/01/2025 au 19/01/2025			Du 19/01/2025 au 09/02/2025 et du 09/03/2025 au 23/03/2025			Du 22/12/2024 au 05/01/2025 et du 09/02/2025 au 09/03/2025		
	A	B	C	A	B	C	A	B	C
Tranches tarifaires									
Adulte			341,47			390,66			497,64
Enf. de 12 à - 18 ans			273,18			312,53			398,11
Enf. de 6 à - 12 ans			239,03			273,46			348,35
Enf. de 2 à - 6 ans			170,74			195,33			248,82

**Supplément chambre individuelle** : 14,00 €/jour/pers - Offert sur tout le séjour dès la 2ème semaine consécutive, (excepté du 24/12/2024 au 05/01/2025 et du 09/02 au 09/03/2025).

Taxe de séjour à régler sur place.

**MONT-/LOUIS Pension complète du 21/12/2024 au 08/03/2025**

Pension complète - Arrivées/départs le samedi

Prix en € par personne et par semaine	Du 04/01/2025 au 18/01/2025			Du 18/01/2025 au 08/02/2025			Du 21/12/2024 au 04/01/2025 et du 08/02/2025 au 08/03/2025		
	A	B	C	A	B	C	A	B	C
Tranches tarifaires									
Adulte			296,73			316,82			396,02
Enf. de 12 à - 18 ans			237,38			253,46			316,82
Enf. de 6 à - 12 ans			207,71			221,77			277,22
Enf. de 2 à - 6 ans			148,36			158,41			198,01

**Supplément chambre individuelle** : 14,00 €/jour/pers - Offert sur tout le séjour dès la 2ème semaine consécutive, (excepté du 21/12/2024 au 04/01/2025 et du 08/02 au 08/03/2025).

Taxe de séjour à régler sur place.

**MEAUDRE location du 21/12/2024 au 22/03/2025**

Location - Arrivées/départs le samedi

Prix en € par semaine et par appartement	Du 04/01/2025 au 08/02/2025 et du 08/03/2025 au 22/03/2025			Du 21/12/2024 au 04/01/2025 et du 08/02/2025 au 08/03/2025		
	A	B	C	A	B	C
Tranches tarifaires						
Studio 2 pers.			285,20			352,21
Studio 4 pers.			335,49			414,32
Studio 5 pers.			400,25			494,29

Taxe de séjour à régler sur place.

**MONT-DAUPHIN location du 21/12/2024 au 04/01/2025 et du 08/02/2025 au 08/03/2025**

Location - Arrivées/départs le samedi

Prix en € par semaine et par appartement	Du 21/12/2024 au 04/01/2025 et du 08/02/2025 au 08/03/2025		
	A	B	C
Tranches tarifaires			
2 pièces 2 pers.			271,86
3 pièces 4 pers.			406,93
4 pièces 6 pers.			473,61
5 pièces 8 pers.			554,83

Supplément appartement 3/4 personnes avec terrasse (en fonction des disponibilités): 30 €/semaine/appartement ou 5 €/nuit/appartement.

Les hébergements avec suppléments ne sont réservables qu'auprès de l'agence de réservation au 04 95 55 20 20.

Taxe de séjour à régler sur place.

**AGAY ROCHES ROUGES Pension complète du 21/12/2024 au 04/01/2025 et du 22/02/2025 au 29/03/2025**

Pension complète - Arrivées/départs le samedi

Prix en € par personne et par semaine	Du 08/03/2025 au 29/03/2025			Du 21/12/2024 au 28/12/2024			Du 28/12/2024 au 04/01/2025 et du 15/02/2025 au 08/03/2025		
	A	B	C	A	B	C	3	B	C
Tranches tarifaires									
Adulte			385,66			398,61			412,07
Enf. de 12 à - 18 ans			308,53			318,89			329,65
Enf. de 6 à - 12 ans			269,97			279,02			288,45
Enf. de 2 à - 6 ans			192,83			199,30			206,03

Supplément chambre individuelle : 14,00 €/jour/pers - Offert sur tout le séjour dès la 2ème semaine consécutive, (excepté du 21/12/2024 au 04/01/2025 et du 22/02 au 08/03/2025).

En fonction des disponibilités :

Supplément chambre 2 pers. balcon vue jardin : 30€/semaine/chambre ou 5€/nuit/chambre. Supplément vue mer : 42€/semaine/chambre ou 7€/nuit/chambre. Supplément vue mer avec balcon 72€/semaine/chambre ou 12€/nuit/chambre

Les chambres avec suppléments ne sont réservables qu'auprès de l'agence de réservation au 04 95 55 20 20.

Taxe de séjour à régler sur place.

**AGAY ROCHES ROUGES Demi-pension du 21/12/2024 au 04/01/2025 et du 22/02/2025 au 29/03/2025**

Demi-Pension - Arrivées/départs le samedi

Prix en € par personne et par semaine	Du 08/03/2025 au 29/03/2025			Du 21/12/2024 au 28/12/2024			Du 28/12/2024 au 04/01/2025 et du 15/02/2025 au 08/03/2025		
	A	B	C	A	B	C	A	B	C
Tranches tarifaires									
Adulte			352,43			366,72			379,10
Enf. de 12 à - 18 ans			281,94			293,37			303,28
Enf. de 6 à - 12 ans			246,70			256,70			265,37
Enf. de 2 à - 6 ans			176,22			183,36			189,55

Supplément chambre individuelle : 14,00 €/jour/pers - Offert sur tout le séjour dès la 2ème semaine consécutive, (excepté du 21/12/2024 au 04/01/2025 et du 22/02 au 08/03/2025).

En fonction des disponibilités :

Supplément chambre 2 pers. balcon vue jardin : 30€/semaine/chambre ou 5€/nuit/chambre. Supplément vue mer : 42€/semaine/chambre ou 7€/nuit/chambre. Supplément vue mer avec balcon 72€/semaine/chambre ou 12€/nuit/chambre

Les chambres avec suppléments ne sont réservables qu'auprès de l'agence de réservation au 04 95 55 20 20.

Taxe de séjour à régler sur place.

**HYERES Pension complète du 21/12/2024 au 15/02/2025****Pension complète** - Arrivées/départs le samedi

Prix en € par personne et par semaine	Du 04/01/2025 au 15/02/2025			Du 21/12/2024 au 28/12/2024			Du 28/12/2024 au 04/01/2025		
	A	B	C	A	B	C	A	B	C
Tranches tarifaires									
Adulte			260,88			279,12			299,19
Enf. de 12 à - 18 ans			208,70			223,30			239,35
Enf. de 6 à - 12 ans			182,62			195,39			209,43
Enf. de 2 à - 6 ans			130,44			139,56			149,60

**Supplément chambre individuelle** : 14,00 €/jour/pers - Offert sur tout le séjour dès la 2ème semaine consécutive, (excepté du 21/12/2024 au 04/01/2025).

En fonction des disponibilités: Supplément chambre avec balcon: 30 €/semaine/chambre ou 5€/nuit/chambre.

Taxe de séjour à régler sur place.

**HYERES Demi pension du 21/12/2024 au 15/02/2025****Demi-Pension** - Arrivées/départs le samedi

Prix en € par personne et par semaine	Du 04/01/2025 au 15/02/2025			Du 21/12/2024 au 28/12/2024			Du 28/12/2024 au 04/01/2025		
	A	B	C	A	B	C	A	B	C
Tranches tarifaires									
Adulte			240,01			256,79			275,26
Enf. de 12 à - 18 ans			192,01			205,44			220,21
Enf. de 6 à - 12 ans			168,01			179,76			192,68
Enf. de 2 à - 6 ans			120,01			128,40			137,63

**Supplément chambre individuelle** : 14,00 €/jour/pers - Offert sur tout le séjour dès la 2ème semaine consécutive, (excepté du 21/12/2024 au 04/01/2025).

En fonction des disponibilités: Supplément chambre avec balcon: 30 €/semaine/chambre ou 5€/nuit/chambre.

Taxe de séjour à régler sur place.

**HYERES Demi pension du 21/12/2024 au 15/02/2025****Demi-Pension** - Arrivées/départs le samedi

Prix en € par personne et par semaine	Du 04/01/2025 au 15/02/2025			Du 21/12/2024 au 28/12/2024			Du 28/12/2024 au 04/01/2025		
	A	B	C	A	B	C	A	B	C
Tranches tarifaires									
Adulte			240,01			256,79			275,26
Enf. de 12 à - 18 ans			192,01			205,44			220,21
Enf. de 6 à - 12 ans			168,01			179,76			192,68
Enf. de 2 à - 6 ans			120,01			128,40			137,63

**Supplément chambre individuelle** : 14,00 €/jour/pers - Offert sur tout le séjour dès la 2ème semaine consécutive, (excepté du 21/12/2024 au 04/01/2025).

En fonction des disponibilités: Supplément chambre avec balcon: 30 €/semaine/chambre ou 5€/nuit/chambre.

Taxe de séjour à régler sur place.

**PORNICHER location du 21/12/2024 au 04/01/2025 et du 08/02/2025 au 29/03/2025****Location** - Arrivées/départs le samedi

Prix en € par semaine et par appartement	Du 21/12/2024 au 04/01/2025 et du 08/02/2025 au 29/03/2025		
	A	B	C
de petite taille			303,28
2 pièces 4 pers.			330,44
2 pièces 5 pers.			347,44
2 pièces 6/7 pers.			375,69

Supplément appartement avec balcon (hors RdC) et en fonction des disponibilités: 30 €/semaine/appartement ou 5 €/nuit/appartement.

Supplément appartement avec accès direct (en fonction des disponibilités) : 42 €/semaine/appartement ou 7 €/nuit/appartement.

Supplément appartement avec accès direct et balcon (en fonction des disponibilités) : 72 €/semaine/appartement ou 12 €/nuit/appartement.

Les hébergements avec suppléments ne sont réservables qu'auprès de l'agence de réservation au 04 95 55 20 20.

Taxe de séjour à régler sur place.

**LE TREZ-HIR location du 21/12/2024 au 04/01/2025****Location** - Arrivées/départs le samedi

Prix en € par semaine et par appartement	Du 21/12/2024 au 04/01/2025		
	A	B	C
6 pièces 6 pers.			315,20
3 pièces 8 pers.			352,65

Taxe de séjour à régler sur place.